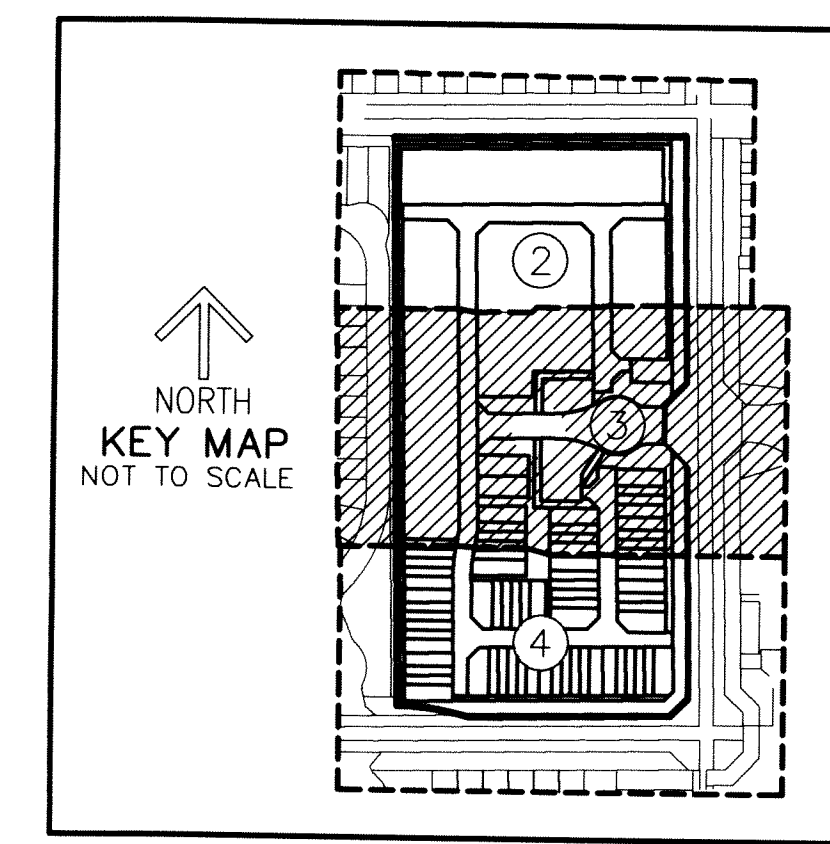
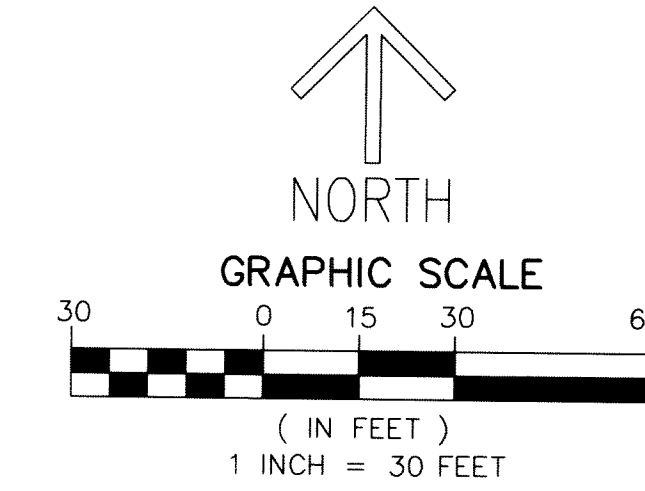


FIELDS AT GULFSTREAM POLO PUD - PLAT SIX

A PLANNED UNIT DEVELOPMENT
 BEING A REPLAT OF A PORTION OF TRACTS 37 AND 44, BLOCK 28, PALM BEACH FARMS CO. PLAT NO. 3,
 AS RECORDED IN PLAT BOOK 2, PAGES 45 THROUGH 54 OF THE PUBLIC RECORDS OF PALM BEACH COUNTY, FLORIDA,
 LYING IN SECTION 29, TOWNSHIP 44 SOUTH, RANGE 42 EAST, PALM BEACH COUNTY, FLORIDA

THIS INSTRUMENT PREPARED BY
 DAVID P. LINDLEY
 OF
CAULFIELD and WHEELER, INC.
 SURVEYORS - ENGINEERS - PLANNERS
 7900 GLADES ROAD, SUITE 100
 BOCA RATON, FLORIDA 33434 - (561)392-1991
 CERTIFICATE OF AUTHORIZATION NO. LB3591

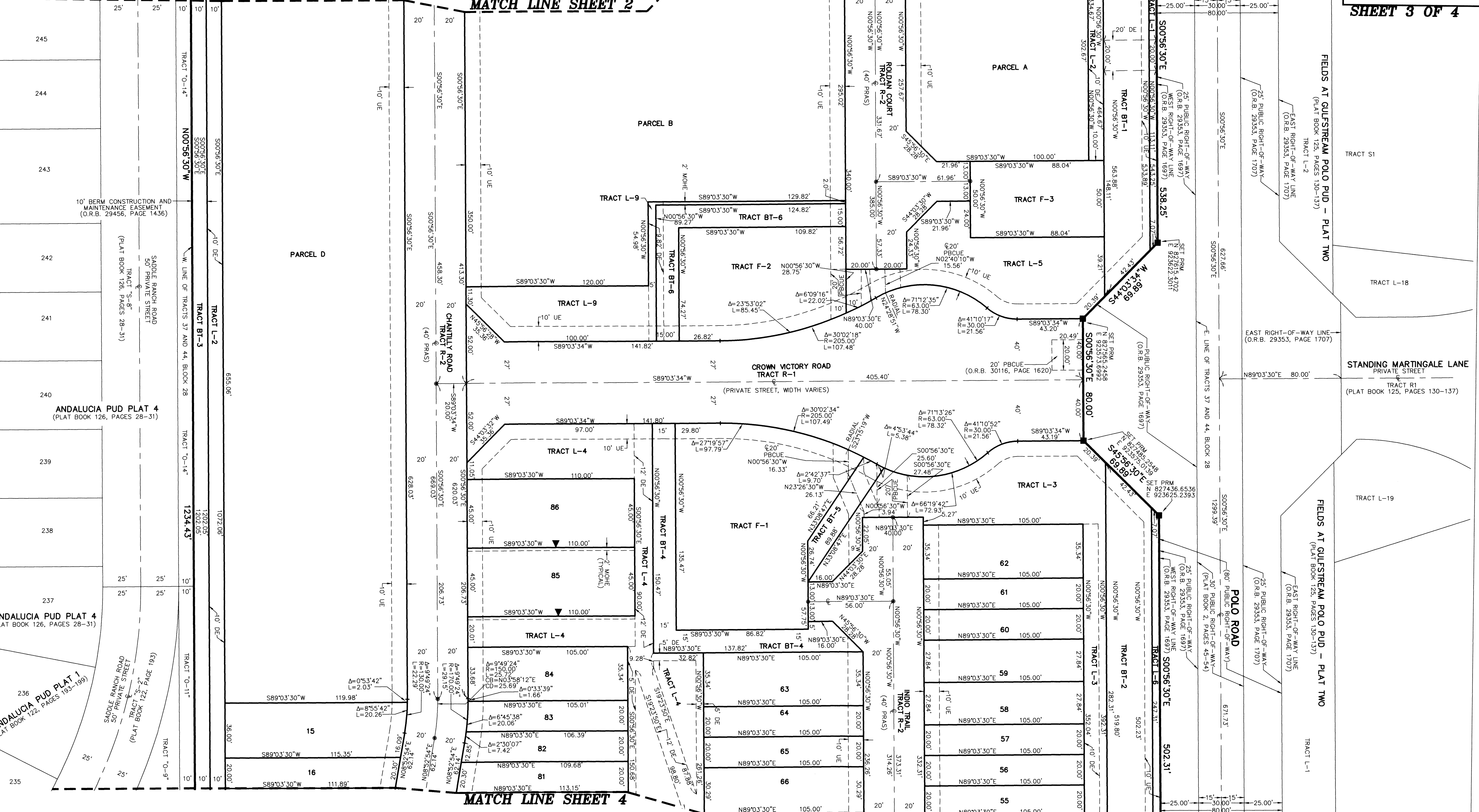


188

SHEET 3 OF 4

- LEGEND/ABBREVIATIONS**
- C - CENTERLINE
 - Δ - DELTA (CENTRAL ANGLE)
 - (O) - CALCULATED
 - CB - CHORD BEARING
 - CD - CHORD DISTANCE
 - DE - DRAINAGE EASEMENT
 - E - EASTING (WHEN USED WITH COORDINATES)
 - L - ARC LENGTH
 - LB - LICENSED BUSINESS
 - L.W.D.D. - LAKE WORTH DRAINAGE DISTRICT
 - N - NORTHING (WHEN USED WITH COORDINATES)
 - NAD - NORTH AMERICAN DATUM
 - MOHE - MAINTENANCE AND OVERHANG EASEMENT
 - O.R.B. - OFFICIAL RECORD BOOK
 - PBCUE - PALM BEACH COUNTY UTILITY EASEMENT
 - PC - POINT OF CURVATURE
 - PNT - POINT OF NON TANGENCY
 - PT - POINT OF TANGENCY
 - PRAS - PRIVATE RESIDENTIAL ACCESS STREET
 - PRAS - PRIVATE RESIDENTIAL ACCESS STREET
 - PUD - PLANNED UNIT DEVELOPMENT
 - R - RADIUS
 - UE - UTILITY EASEMENT
 - UE - INDICATES "ZERO" SIDE OF LOT LINE
 - PRM - DENOTES SET PERMANENT REFERENCE MONUMENT 4" x 4" x 24" CONCRETE MONUMENT WITH ALUMINUM DISK STAMPED "C&W PRM LB3591"
 - PCP - DENOTES SET PERMANENT CONTROL POINT NAIL AND METAL DISK STAMPED "PCP LB3591"
 - (P) - PALM BEACH FARMS CO. PLAT NO. 3 (PLAT BOOK 2, PAGES 45-54)

- NOTES**
COORDINATES, BEARINGS AND DISTANCES
- COORDINATES SHOWN ARE GRID
 - DATUM = NAD 83 (90 ADJUSTMENT)
 - ZONE = FLORIDA EAST
 - LINEAR UNIT = US SURVEY FEET
 - COORDINATE SYSTEM 1983 STATE PLANE
 - TRANSVERSE MERCATOR PROJECTION
 - ALL DISTANCES ARE GROUND, UNLESS OTHERWISE NOTED
 - SCALE FACTOR = 1.0000236
 - GROUND DISTANCE X SCALE FACTOR = GRID DISTANCE
 - BEARINGS AS SHOWN HEREON ARE GRID DATUM, NAD 83 (90 ADJUSTMENT), FLORIDA EAST ZONE.



MATCH LINE SHEET 2

MATCH LINE SHEET 4

FIELDS AT GULFSTREAM POLO PUD - PLAT TWO
 (PLAT BOOK 125, PAGES 130-137)

FIELDS AT GULFSTREAM POLO PUD - PLAT TWO
 (PLAT BOOK 125, PAGES 130-137)

ANDALUCIA PUD PLAT 4
 (PLAT BOOK 126, PAGES 28-31)

ANDALUCIA PUD PLAT 4
 (PLAT BOOK 126, PAGES 28-31)

ANDALUCIA PUD PLAT 1
 (PLAT BOOK 122, PAGES 193-199)

STANDING MARTINGALE LANE
 PRIVATE STREET
 TRACT R1
 (PLAT BOOK 125, PAGES 130-137)

POLO ROAD
 (PLAT BOOK 2, PAGES 45-54)